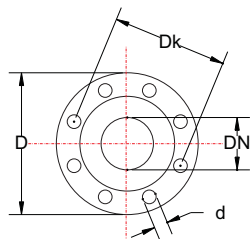
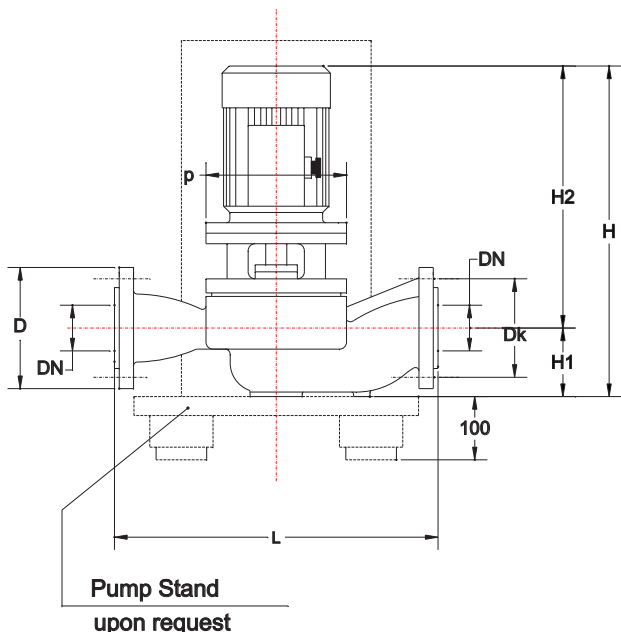


Cirkulator Pumps with flange

Inline pumps



Flange NP 16 - DIN 2531

DN	D	D1	Dk	n x d
	mm			No. x mm
80	200		160	8 x 19

Measurements

L	L1	L2	k	DN	H1
mm					
500				80	110

Pump Type	Motor Data				Measurements		
	Type	kW	A	r.p.m	Hmm	H2mm	P
PCPL 80-210A	160 L-2	18,5	36,5	2910	844	724	350
PCPL 80-210	160 M-2	15	29	2930	800	680	350
PCPL 80-200	160 M-2	15	29	2930	800	680	350
PCPL 80-180	160 Mk-2	11	21,4	2910	800	680	350

Comprex PCPL80 - 2900 r.p.m

Temperature Range : -20 to +140 °C

System pressure: NP 16 (bar)

Materials:

For temperatures up to + 90 °C:

Cast iron, stainless steel

Mechanical seal: Carbon / Ceramic.

For temperatures above +90 °C:

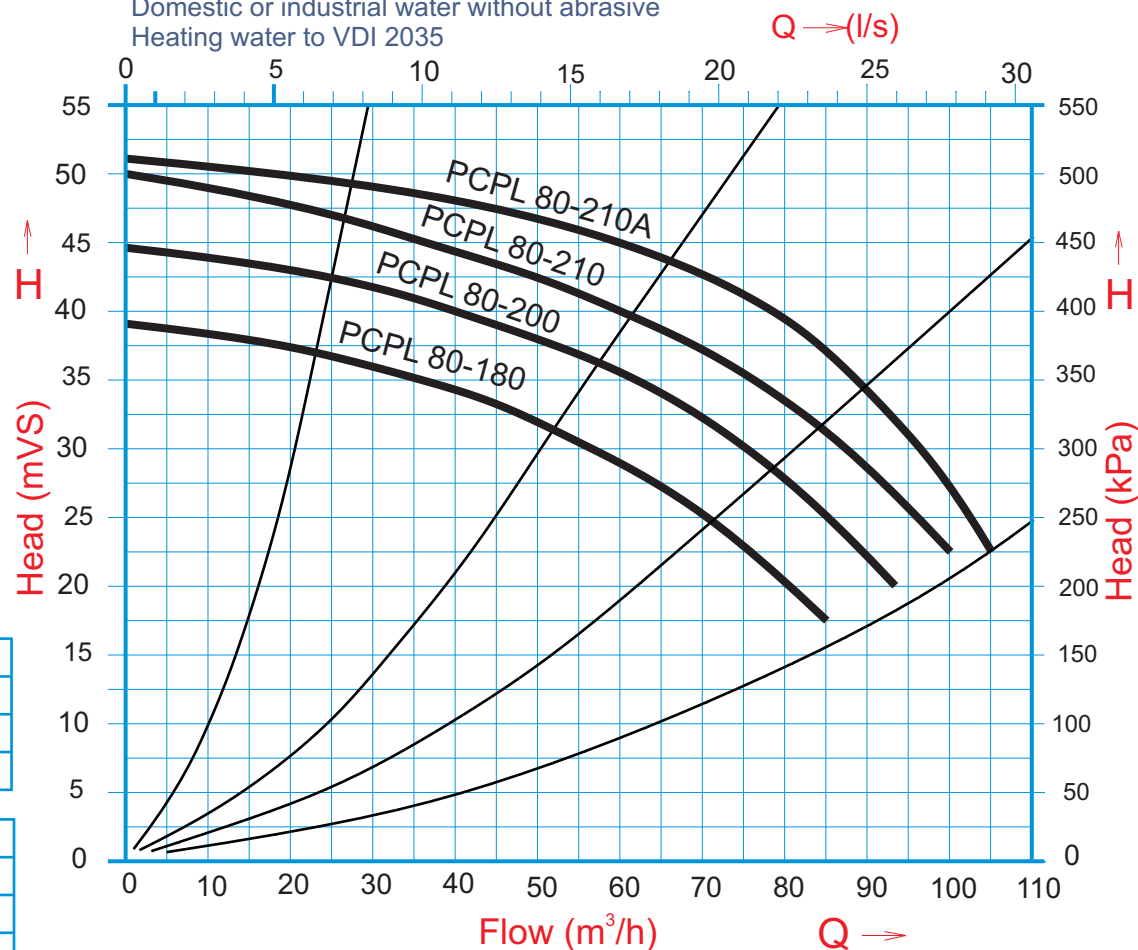
Cast iron, stainless steel and bronze.

Mechanical seal: SiC / SiC / Viton.

Allowed fluids:

Domestic or industrial water without abrasive

Heating water to VDI 2035



Type testing of pumps is made at the Institute for Hydraulic Machines faculty of Mechanical Engineering in Belgrade, in accordance with the recommendations of DIN 1944 and ISO 2548th.

Report number: 06-01-03/95