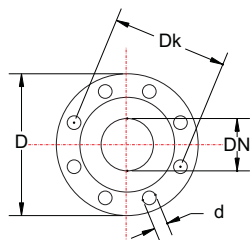
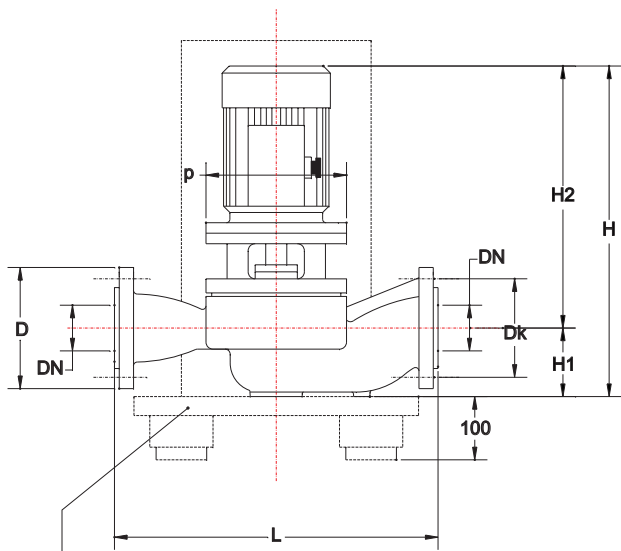


# Cirkulator Pumps with flange

## Inline pumps



### Flange NP 16 - DIN 2531

DN	D	D1	Dk	n x d
	mm			No. x mm
80	200		160	8 x 19

Measurements						
L	L1	L2	k	DN	H1	
mm						
500				80	110	

Pump Type	Motor Data				Measurements	
	Type	kW	A	r.p.m	Hmm	H2mm
PCP 80-210	112 M-4	4	8,7	1440	600	490
PCP 80-200	100 Ld-4	3	6,7	1410	593	483
PCP 80-185	100 L-4	2,2	5,3	1400	593	483
PCP 80-170	100 L-4	2,2	5,3	1400	593	483

## Comprex PCP80 - 1450 o/min

Temperature Range : -20 to +140 °C

System pressure: NP 16 (bar)

Materials:

For temperatures up to + 90 °C:

Cast iron, stainless steel

Mechanical seal: Carbon / Ceramic.

For temperatures above +90 °C:

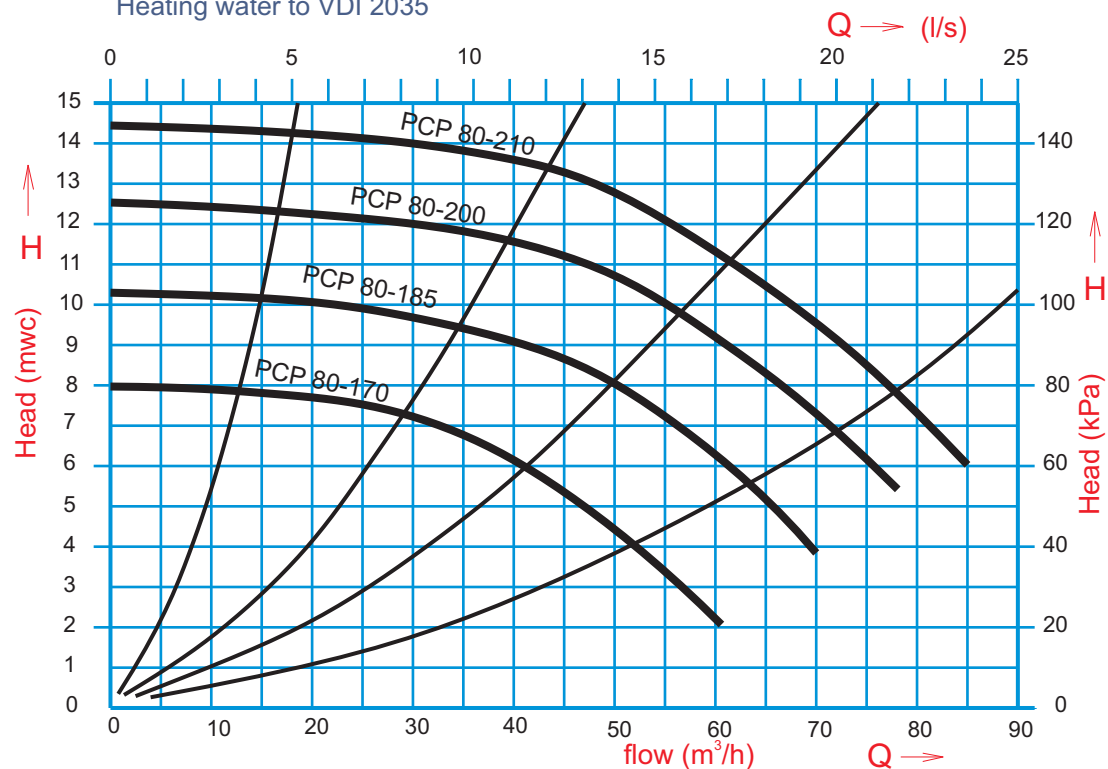
Cast iron, stainless steel and bronze.

Mechanical seal: SiC / SiC / Viton.

Allowed fluids:

Domestic or industrial water without abrasive

Heating water to VDI 2035



Type testing of pumps is made at the Institute for Hydraulic Machines faculty of Mechanical Engineering in Belgrade, in accordance with the recommendations of DIN 1944 and ISO 2548th. Report number: 06-01-03/95