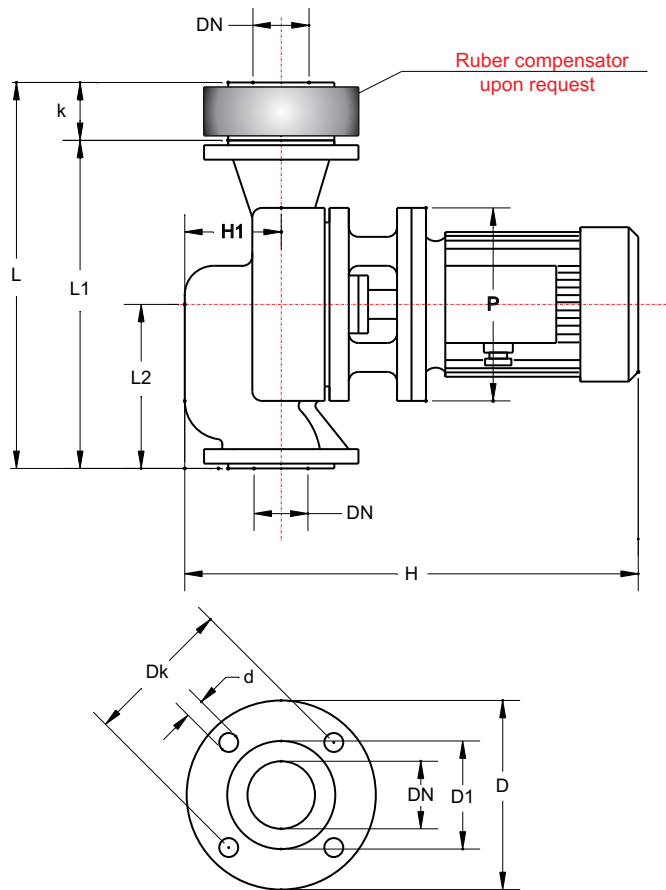


Cirkulator Pumps with flange

Inline pumps



Comprex CPL80 - 2900 r.p.m

Temperature Range : -20 to +140 °C

System pressure: NP 6 (bar)

Materials:

For temperatures up to + 90 °C:

Cast iron, stainless steel

Mechanical seal: Carbon / Ceramic.

For temperatures above +90 °C:

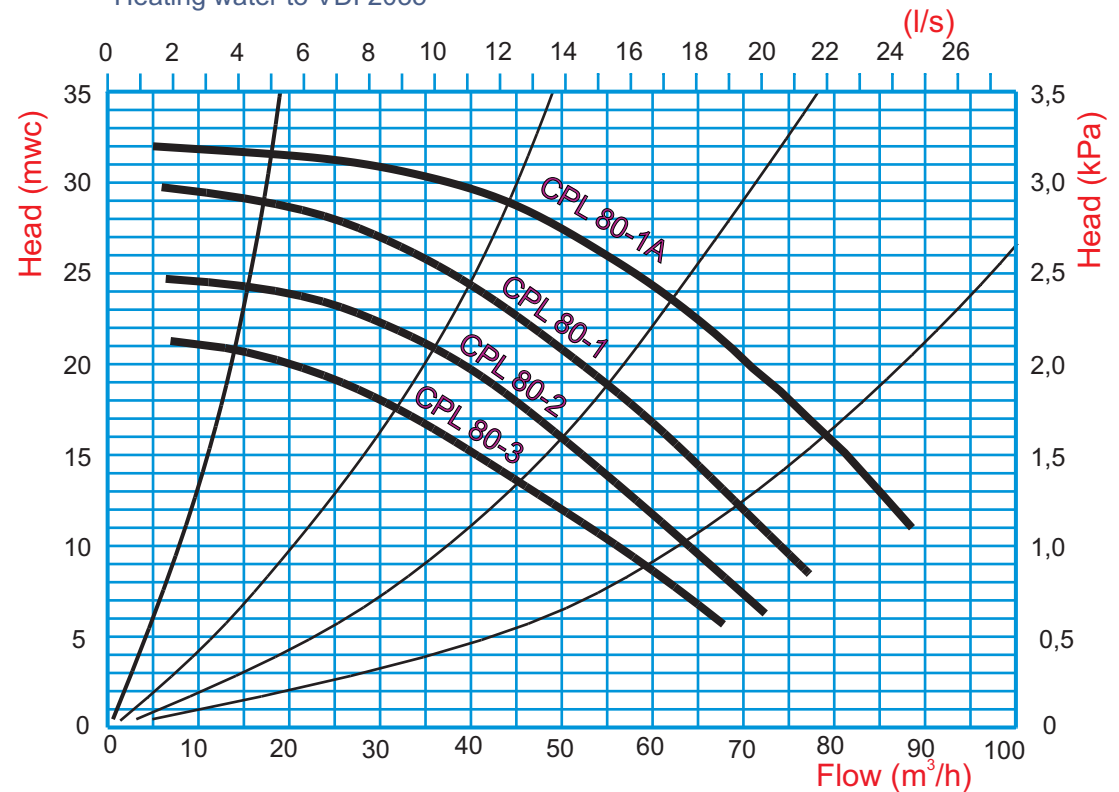
Cast iron, stainless steel and bronze.

Mechanical seal: SiC / SiC / Viton.

Allowed fluids:

Domestic or industrial water without abrasive

Heating water to VDI 2035



Flange NP 6 - DIN 2531					Measurements					
DN	D	D1	Dk	n x d	L	L1	L2	k	DN	H1
	mm			No.x mm	mm					
80	190	128	150	4 x 18	410	340	175	70	80	95

Pump Type	Motor Data				Measurements		Mass
	Type	kW	A	r.p.m	Hmm	Pmm	kg
CPL 80-1A	132 S-2	7,5	15,4	2860	642	300	87
CPL 80-1	132Mk-2	5,5	10,5	2860	642	300	80
CPL 80-2	132Mk-2	5,5	10,5	2860	642	300	80
CPL 80-3	112 M-2	4	7,9	2880	558	250	62

Type testing of pumps is made at the Institute for Hydraulic Machines faculty of Mechanical Engineering in Belgrade, in accordance with the recommendations of DIN 1944 and ISO 2548th. Report number: 06-01-03/95