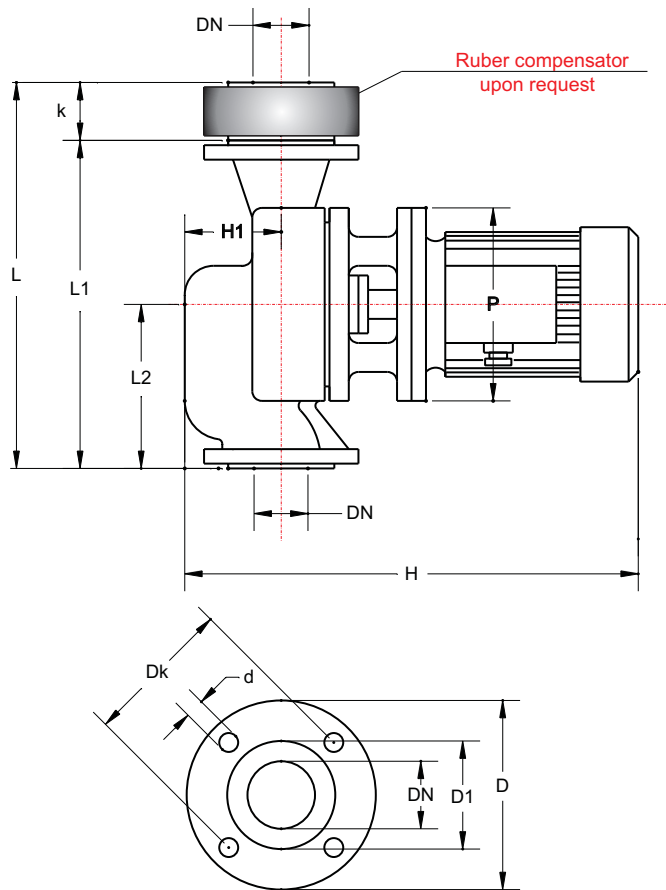


Cirkulator Pumps with flange

Inline pumps



Comprex CPL50 - 2900 r.p.m

Temperature Range : -20 to +140 °C

System pressure: NP 6 (bar)

Materials:

For temperatures up to + 90 °C:

Cast iron, stainless steel

Mechanical seal: Carbon / Ceramic.

For temperatures above +90 °C:

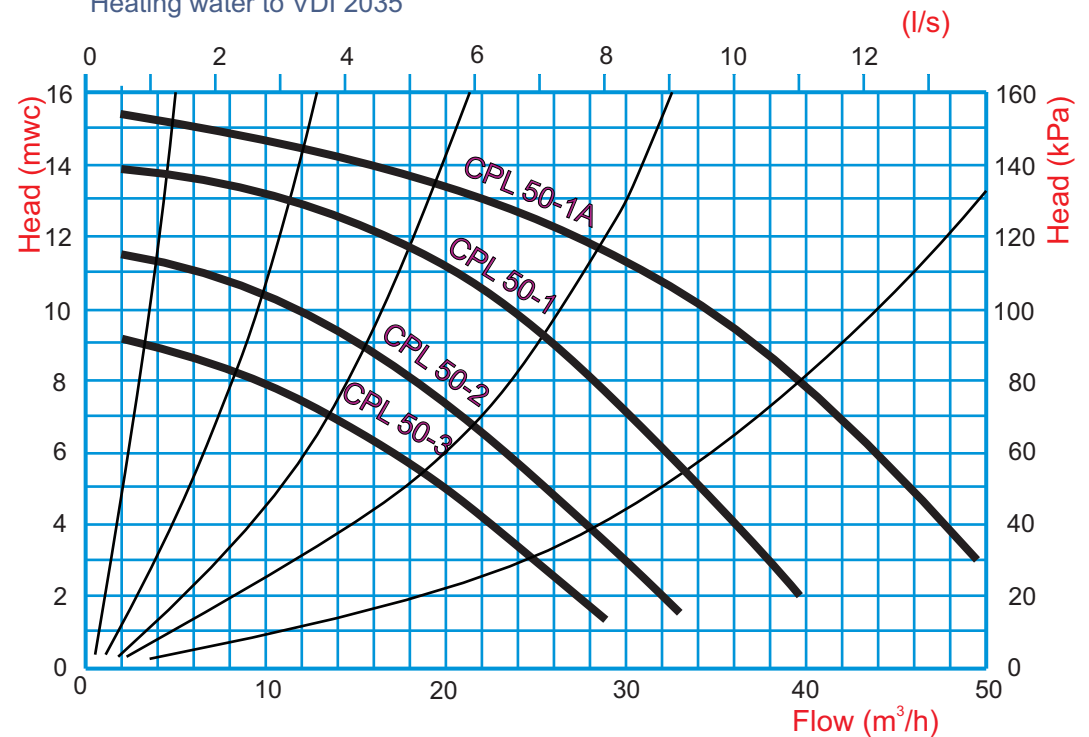
Cast iron, stainless steel and bronze.

Mechanical seal: SiC / SiC / Viton.

Allowed fluids:

Domestic or industrial water without abrasive

Heating water to VDI 2035



Flange NP 6 - DIN 2531					Measurements					
DN	D	D1	Dk	n x d	L	L1	L2	k	DN	H1
	mm			No.x mm	mm					
50	140	90	110	4 x 14	270	220	105	50	50	70

Pump Type	Motor Data				Measurements		Mass
	Type	kW	A	r.p.m	Hmm	Pmm	kg
CPL 50-1A	90 S-2	1,5	3,7	2885	460	200	31
CPL 50-1	80 B-2	1,1	2,7	2820	420	200	26
CPL 50-2	80 A-2	0,75	1,9	2790	420	200	25
CPL 50-3	71 B-2	0,55	1,5	2800	380	160	22

Type testing of pumps is made at the Institute for Hydraulic Machines faculty of Mechanical Engineering in Belgrade, in accordance with the recommendations of DIN 1944 and ISO 2548th. Report number: 06-01-03/95